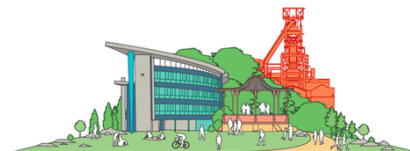




**Easy Read Version
of
Neath Port Talbot Council's
Plan for Children & Young
People Services
2019 - 2022**



What is the Plan?



The plan describes how Neath Port Talbot Council will meet the social care needs of local children, young people and their families.

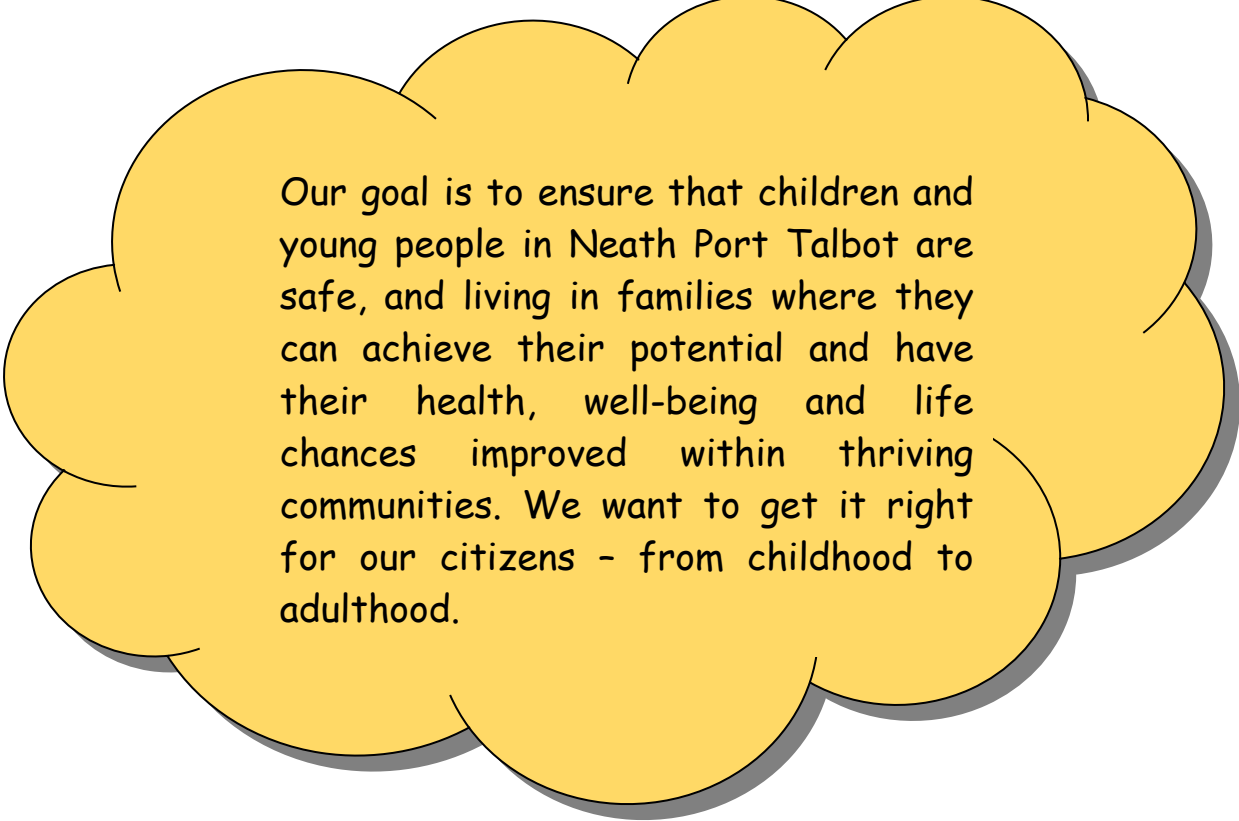


The plan tells us how Children and Young People Services will make sure children and young people are brought up in a safe, positive environment and that they have the right support.



This plan was written by staff from Neath Port Talbot Council and was consulted on widely.

What does Neath Port Talbot Council want out of the Plan?



Our goal is to ensure that children and young people in Neath Port Talbot are safe, and living in families where they can achieve their potential and have their health, well-being and life chances improved within thriving communities. We want to get it right for our citizens - from childhood to adulthood.

Our Priorities

The plan has a number of areas:

Early Intervention & Prevention

By helping people to access simple support services, and better targeted early interventions, we will resolve problems before they become overwhelming.

Safeguarding

Children should live or grow up in homes where they feel safe and secure. Children who are at risk should be supported with a view to trying to make things get better and stay better.

Ensure that Looked After Children have high quality care

We will make sure children have stability and do not remain in care longer than they need to.

Outcome focused

Services provided should contribute positively to children's lives, maximising the child's potential and improve stability.

Supporting Young Carers

We want to reduce the number of families who rely on the care of a young person for their care needs because it impacts negatively on a young person's emotional and physical well-being.